

# A Fashion tour in PARIS

9-12 janvier 2023

BTS1 et BTS2 MMV



Le Musée d'Orsay



Ateliers de costumes de Disney



Musée Dior



Musée des Arts Décoratifs:  
exposition Elsa Schiaparelli





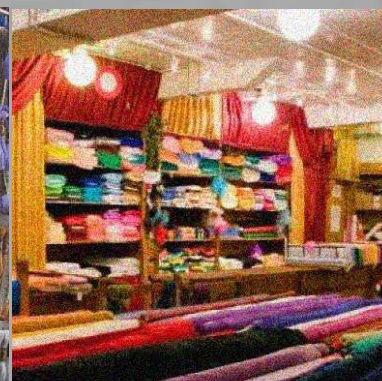
Eva  
Elisa  
Eliam  
Emma





The Marché Saint-Pierre district is a collection of streets located in the south of the 18th district of Paris at the foot of the Montmartre hill, in which are the largest collection of shops dedicated to the furnishing and decoration fabric of the Parisian agglomeration.





The Saint Pierre Market listed structure has 5 floors and 1 roof-top dedicated exclusively to the world of fabrics.

You will find:

- ✓ Destocking of fabrics - Basement
- ✓ Bargain fabrics - Ground floor
- ✓ Home linen fabrics - 1st floor
- ✓ Fabrics Clothing/ Haute Couture - 2nd floor
- ✓ Fabrics Furnishings - 3rd floor
- ✓ Fabrics Ameublement Luxe Collection/ Publisher - 4th floor
- ✓ Haberdashery (coming soon) - 5th floor

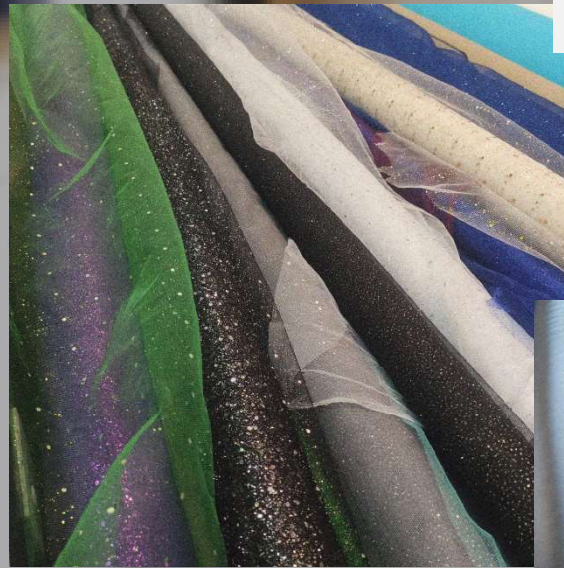


Choosing fabrics/material for new creations...





Selected fabrics





Thank you for this beautiful trip <3







# Frida Kahlo







## ABOUT HER

Frida Kahlo was born in 1907 at Mexico. She is a surrealism artist. She's started painting in 1925.

# FRIDA KAHLO



## CHILDHOOD

She was a first model photographer of many photographers for example her dad and also she improves a artistic fibers. In fact, the photograph it's become her first mean of expression.



## THE ACCIDENT

She suffered an bus accident at the age 18 years old in 1925 and she becomes bedridden. It's the end of her dream to become a doctor, she develop a creativity. She control her image in her life, in her picture and in her protect.



## FRIDA AND FASHION

She becomes an activist and build an visual vocabulary with which she expressed her emotional suffering. After her accident, she created a hybrid style mixing elements from different regions and eras. She plays a sort of pioneering role through her choice of the clothing and accessories adapted to her medical needs. She also manifest her philosophy through clothing by wearing suits normally worn by men and called herself gender neutral.



## Gender and Identity

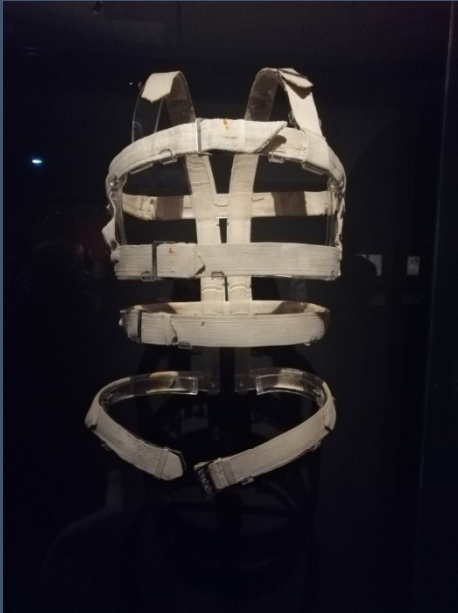


Throughout her life, she used clothes, hairstyles, and accessories to fashion diverse, complex, and at times contradictory gendered identities.



« I have the moustache and in general, the face of the opposite sex »





An example of corset.

And how she painted  
after her accident.



Frida with her husband  
Diego Rivera.



One of her best-known works.

## FRIDA KAHLO

1907-1954

### *La Columna brisée*, 1944, Mexique

Huile sur toile

© 2022 Banco de México, Trust des musées Diego Rivera et Frida Kahlo, Mexico, D.F. / INBAL / Adagp, Paris

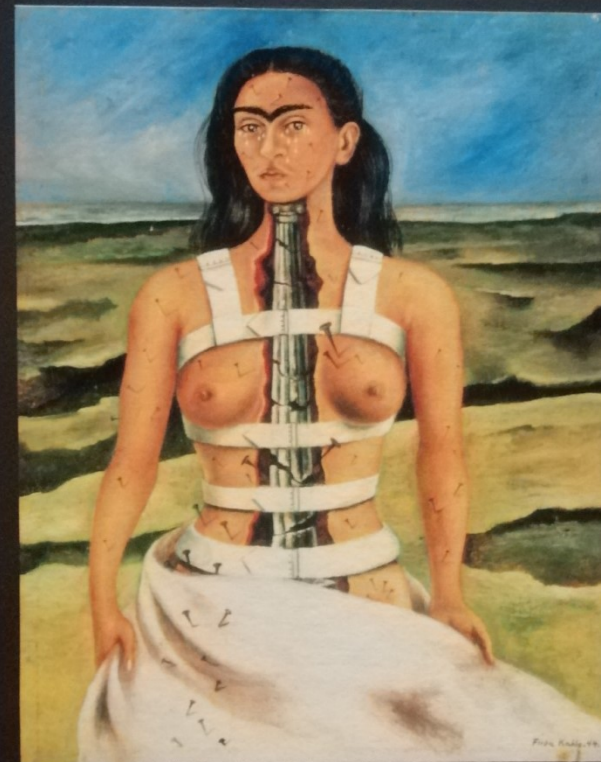
Dans *La Columna brisée*, Frida Kahlo se dépeint comme blessée, mais provocante, les seins nus. Elle porte un corset orthopédique comme ceux exposés ici. Les clous qui transpercent son corps évoquent le martyre chrétien de saint Sébastien, criblé de flèches, et sa colonne vertébrale suggère une colonne architecturale en ruine. Le paysage mexicain fissuré fait écho à son corps brisé. Ses larmes et ses longs cheveux négligés évoquent la pleureuse de la tradition mexicaine, la Llorona.

### *The Broken Column*, 1944, Mexico

Oil on canvas

© 2022 Banco de México, Diego Rivera & Frida Kahlo Museums Trust, Mexico, D.F. / INBAL / Adagp, Paris

In *The Broken Column*, a bare-breasted Kahlo depicts herself as injured but defiant. She wears an orthopaedic corset similar to the ones shown in this gallery. The nails that pierce her body evoke the Christian martyrdom of Saint Sebastian, riddled by arrows, while her spine is represented as a crumbling architectural column. The fissured Mexican landscape echoes Kahlo's broken body. The tears staining her face and her long unkempt hair evoke the weeping woman of Mexican lore, La Llorona.







« I paint self-portraits because I'm so often alone, because I'm the person I know best. »

Frida Kahlo





Her dressing.



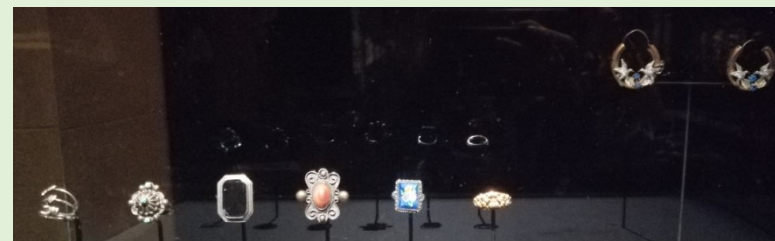
Coloured

Atypical

Extravagant

Mexican

Detailed







Thank you

Fontvielle Anaïs

TS1 MMV



« Hommage à Frida Kahlo »

Jean Paul Gaultier

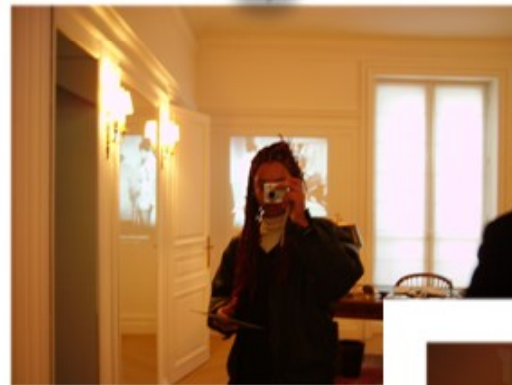
1998



WELCOME TO CHRISTIAN'S WORLD

Christian  
Dior

*The exhibition was at the  
Dior gallery next to the  
Champs de Mars*





*The third floor... was amazing and  
incredible!  
I felt like I was in another dimension.*



*Then we went to the  
second floor. Each room  
had its own aesthetic.*









*We saw some prototypes: « pretty little dress ».*





/  
Thanks for the trip ! It was really  
nice and awesome !



# **SHOCKING !**

## LES MONDES SURRÉALISTES D'ELSA SCHIAPARELLI

- Musée des Arts décoratifs, Paris -



Alexia, Aurore, Darlène, Lisa - BTS MMV - Lycée Argouges



## Elsa's Schiaparelli short biography

- 1890 — Birth of Schiaparelli
- 1916 — Lived in NY with her husband
- 1922 — Settled in Paris (when her marriage ended)
- 1927 — Her first collection entitled “Presentation n°1” at her home
- 1936 — Collaboration with Dalí

### Presentation n°1

Her collection consisted of hand-knit sweaters and knitwear with trompe l'oeil pattern effects (like knot and ties).



*French edition of Vogue - “masterpiece”*

### Schiaparelli x Dalí





1937

Launch of the perfume  
**Shocking** (small bottle  
designed by Leonor Fini)  
+ “The Butterfly and its  
metamorphosis”  
collection

Summer  
1938

“The circus” collection

Hiver  
38/39

“The signs of zodiac”  
collection

Fall  
1939

“Musical dreams”  
collection

1973

Death of Schiaparelli  
(83 years old)

## The Butterfly and its metamorphosis



## The circus



Schiaparelli writes in her memoirs - *it was the most “tumultuous, most audacious collection”.*



## The signs of zodiac



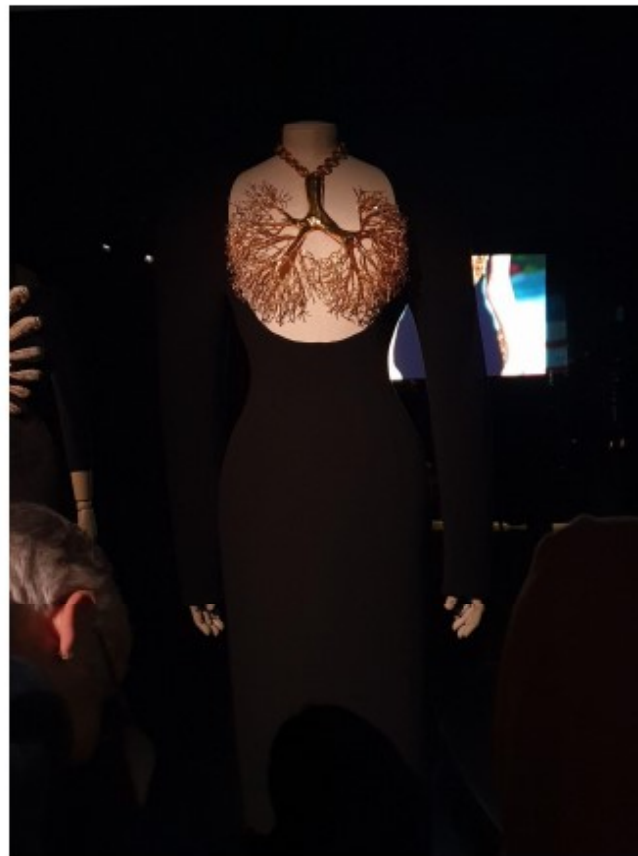
## Musical dreams





## The Schiaparelli story continues

- with the talented Daniel Roseberry -



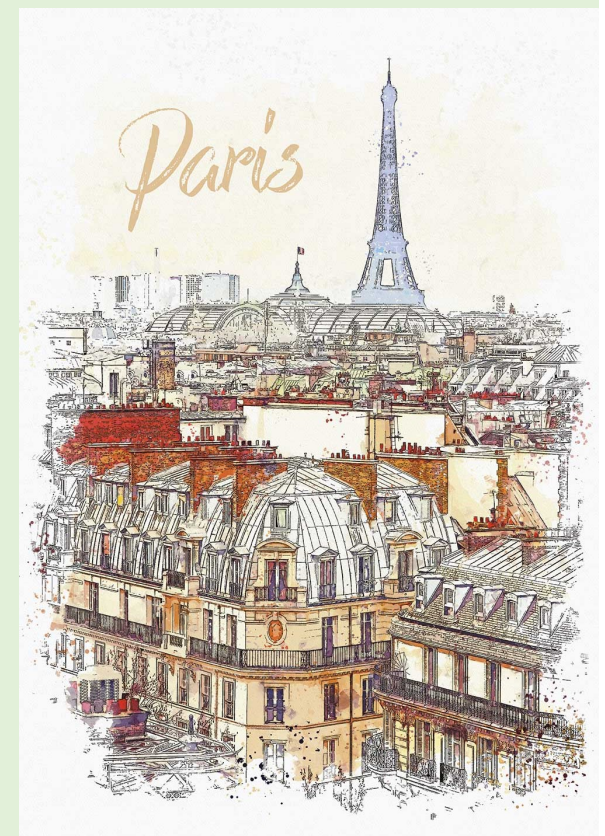




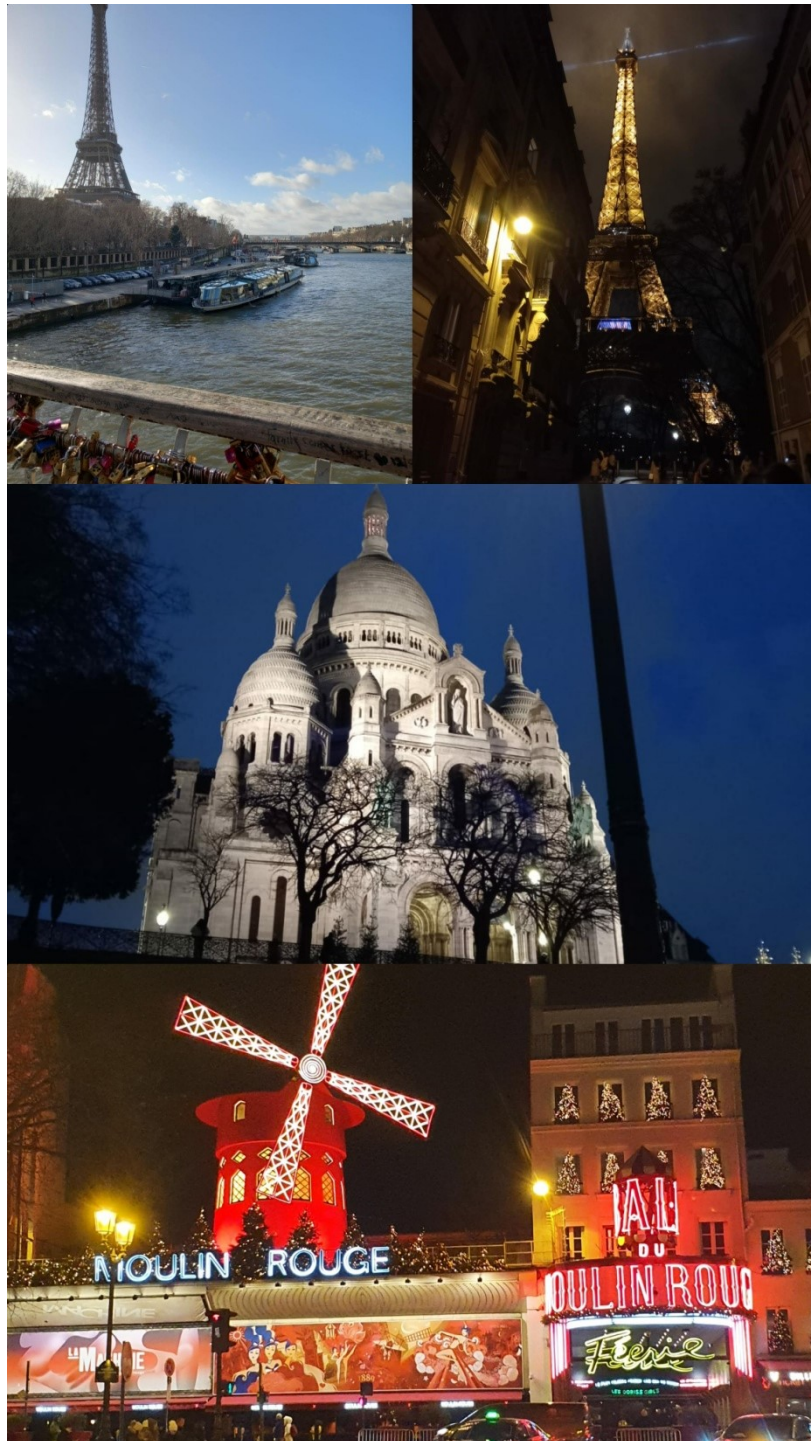
# ***Trip to Paris***



Marianne  
Stéphanie  
Anne-Sophie







The Eiffel Tower The Sacré Cœur The Moulin Rouge

## Discovering the streets of the city

Galerie Lafayette Haussman

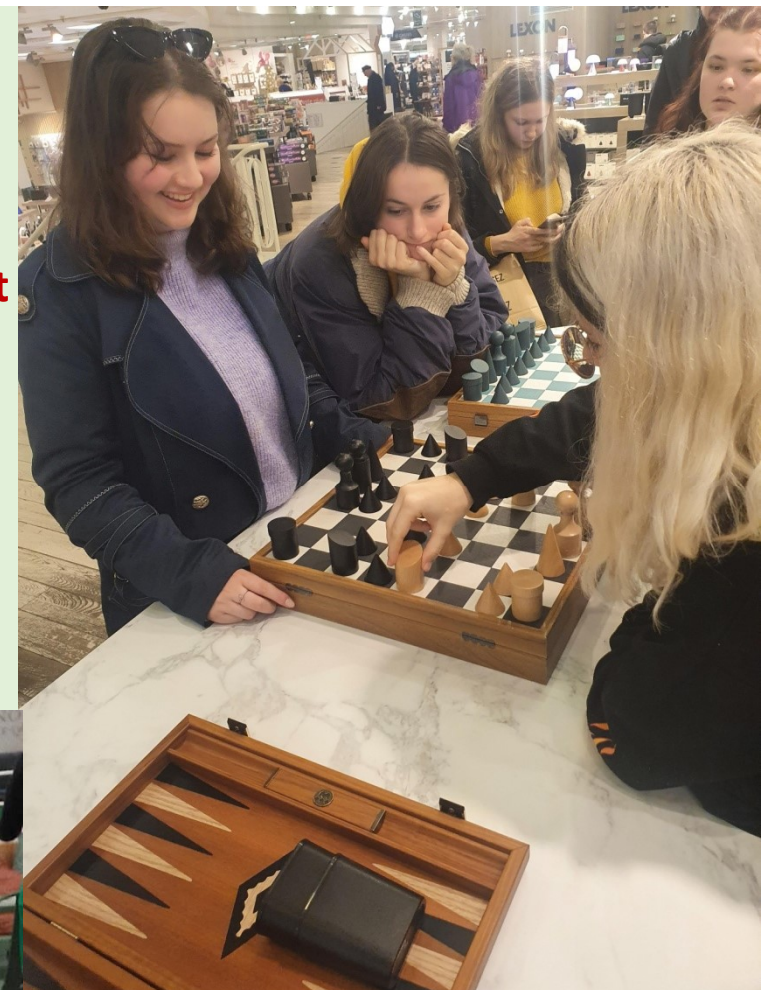






**Après l'effort le réconfort !  
Crêperie près des Champs élysées**

**« Queen's Gambit » c'était serré entre Marianne et Aubane (BHV Marais)**



**Petit appetizer  
au BHV Marais  
avant le flunch  
du soir**



**Petit thé bien  
relaxant dans  
un petit bar  
avec les BTS2**





## Visit to Disneyland Park



Souvenir shop



Disneyland park





**A walk in avenue Montaigne + visit to The Dior Gallery and its shop**

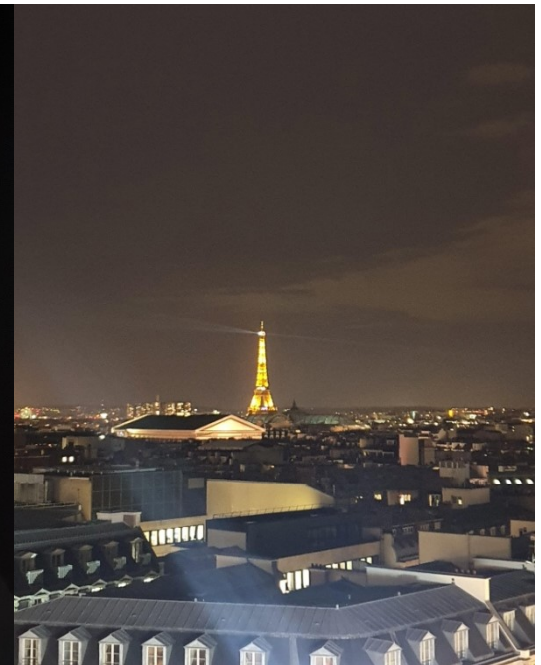




**Visit to Vivienne Westwood shop  
(near The Louvre)**







A big thank you to Mrs Lancia, Borschneck and Hue :)

